

Making Australian wheat your first choice



Wheat Variety Classification

Robert Sewell AM.
WCC Chair

History of Classification

- AWBI function until deregulation of bulk wheat exports in 2008
- GRDC transition arrangements est Wheat Classification Council and Variety Classification Panel to conduct classification 2009 and 2010
- Wheat Quality Australia Ltd established 2011
 - Not for Profit Company limited by guarantee
 - Industry, GRDC and GTA funding
 - Wheat Classification including WCC and VCP

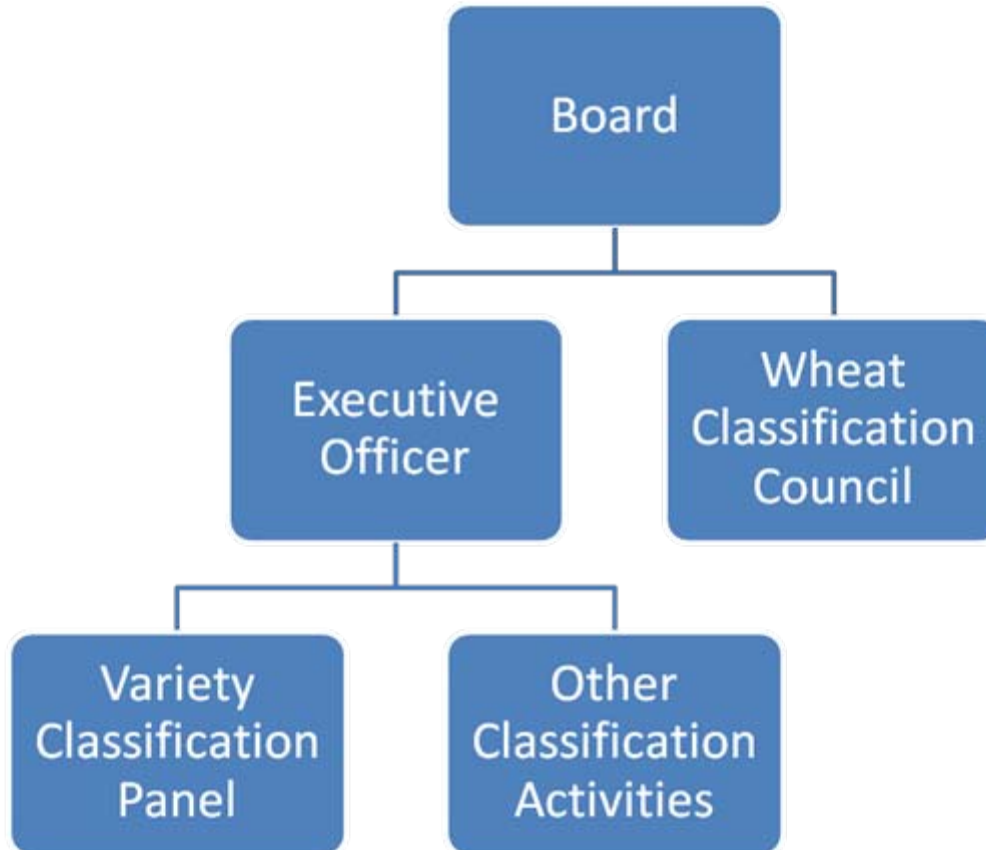
Variety Classification

- Wheat Classification
 - Categorisation of wheat varieties into Classes based on processing and end product quality
 - Based on inherent (genetic) quality traits – too complex and difficult to assess at receipt eg
 - Flour yield, colour
 - Dough strength and extensibility
 - Baking and noodle making
 - Responsibility of WQA Ltd

Receival Standards

- Receival Standards
 - Categorisation of deliveries into binning grades or saleable parcels
 - Relies on variety declaration
 - Based on physical attributes determined by the environment
 - Protein, screenings, moisture, test weight, falling number, contaminants
 - Responsibility of Grain Trade Australia

WQA Ltd Structure



Scope of WCC

- Reports to WQA Board, supported by Executive Officer
- Classification requirements and processes
- Recommends strategy and direction
- Composed of industry subscribers and wheat breeding representatives

Achievements of WCC

- Introduction of APWN
- Development of protocol for expansion of APH nationally
- Confirmed requirement for LMA assessment
- Removal and review of old varieties

APWN

- New Class in Western Australia
- Tailored to the Japanese and Korean blend requirements
- Acceptable varieties
 - Cascades, EGA Bonnie Rock, Gutha, Halberd, King Rock, Nyabing, Rees, Westonia and Wyalkatchem
- Industry cooperation has resulted in segregation in 2010/11

APH NATIONALLY

- WCC agreed APH should be segregated wherever wheat of suitable quality can be produced.
- Reputation and brand of APH to be protected
- Industry to work together to develop a protocol for the establishment of the APH Class nationally.
- Rigorous testing domestically & internationally to ensure the quality of wheat in these new regions will match the quality of traditional APH

Late Maturity alpha-Amylase Screening Confirmed

- LMA screening to remain part of the wheat classification process.
- Amylase is an enzyme that converts starch to sugar for germination – causes low FN
- LMA is amylase production during grain development – prior to ripening. The enzyme remains in the grain and causes apparently sound, ripe grain to have low falling number.
- Alternative would be FN testing of every load every year

Remove & Review Varieties

- 2011/12 - remove varieties from the masterlist that have been classified for more than 10 years and have not been delivered into the central storage system for the last 2 seasons (2008/09 & 2009/10).
- 2012/13 - remove varieties from the masterlist that have been classified for more than 10 years and have only been delivered in small volumes (less than 0.1% of the classification region) for the last 2 seasons (2008/09 & 2009/10).
- Varieties classified more than 10 years ago, remaining on the list after the removal of low and nil production varieties, will have their classifications reviewed.
- 10 year period of validity for future classification decisions

Zero deliveries

ARNHEM	DARTER	GLUCLUB	KEWELL
AVOCET	DECLIC	GOLDEN KING	KIATA
BALDMIN	DENNIS	HERON	KING
BASS	DEVON	HOPPS	KINGS EARLY
BAYONET	DIRK	HOUTMAN	KONDUT
BEACON	DURAL	HUGUENOT	KRONOS
BEDKIN	DURATI	HYBRID APOLLO	KULIN
BODALLIN	EGRET	HYBRID GEMINI	LILLIMUR
BOKAL	ESPERIO	HYBRID PULSAR	LOWAN
BUNGULLA	EUREKA	HYBRID TITAN	MATONG
CANNA	FESTIVAL	HYDEN	MENDOS
CELEBRATION	FORD	INSIGNIA	MENGAVI
CLAYMORE	GALA	INSIGNIA 49	SONGLEN
CLUBHEAD	GAMBEE	ISIS	SPICA
COMET	GAMUT	JABIRU	STRETTON
CRANBROOK	GLENWARI	KATUNGA	SUMMIT
MILING	MULTILINE	KATYIL	SUNDOR
MILLEWA	NOONGAR	REEVES	SWIFT
MINTO	OWLET	ROBIN	TAMMIN
MOKOAN	PATERSON	SCIMITAR	TARSA
MOLINEUX	PELSART	SCOTTIE	TASMAN
MORAY	PINEHEAD	SEAFOAM	TATIARA
TIMSON	PINNACLE	SEEWARI	TERN
TORRES	PUSA FLORA	SERI 82	TERRA
TRILLER	QUARRION	SHERPA	TIMGALEN
VASCO	WARBLER	SHORTIM	WINDEBRI
VECTIS	WARIMBA	SHRIKE	WREN
WARATAH		SKUA	ZENITH

Less than 0.1% of Deliveries

AJANA
AMERY
ANGAS
ANLACE
BANKS

FELIX
FESTIGUAY
FLINDERS
GABO
GAMENYA

LAWSON
MADDEN
MAWSON
MERSEY
MIRA

SUNECA
SUNKOTA
SUNLAND
SUNSOFT 98
SUNSTAR

BAROOTA WONDER
BENCUBBIN
BEULAH
BINDAWARRA
COCAMBA
CONDOR

GATCHER
GORDON
GREBE
GUNDEROI
GUTHA T
HARRISMITH

MISKLE
MORE
MUCHMORE
MULGARA
NYABING T
OLYMPIC

TAILORBIRD
TAKARI
TEAL
TENNANT
TINCURRIN
VULCAN

COOK

HYBRID MERCURY

OSPREY

WAGIN

CORELLA
CORRIGIN
CURRAWONG
DARKAN
DATATINE
DIAZ
DURAMBA
EAGLE
EMBLEM
FALCON

HYBRID METEOR
JACUP
KALANNIE
KALKEE
KARLGARIN
KINGS WHITE
KITE
KODA
LANCE
LARK

OUYEN
OXLEY
PARDALOTE
PEROUSE
PETREL
RAVEN
ROWAN
SABRE
SCHOMBURGK
SUNBIRD

WARIGAL
WIALKI
WINGLEN
WONGOONDY
WORRAKATTA
WYUNA
YANAC
YARRALINKA

Old Variety –Classification Review

AROONA

BLADE

DAGGER

DOLLARBIRD

ERADU

GLAIVE

HARTOG

HALBERD T

HARRIER

KAMILAROI

MACHETE

MEERING

SPEAR

SUNCO

WILGOYNE

SUNELG

ROSELLA

YALLAROI

SUNFIELD

KELALAC

JANZ

SUNBRI

BATAVIA

EXCALIBUR

BT SCHOMBURGK

CADOUX

SUNMIST

SUNSTATE

STILETTO

TRIDENT

GOROKE

WOLLAROI

BARUNGA

SUNVALE

CASCADES T

FRAME

SUNBROOK

BOWIE

KRICHAUFF

LEICHHARDT

BUCKLEY

GOLDMARK

SILVERSTAR

SUNLIN

ARRINO

CALINGIRI

WESTONIA T

H45

BROOKTON

DIAMONDBIRD

TAMAROI

BRENNAN

SNIPE

CAMM

KENNEDY

BAXTER

WHISTLER

CUNNINGHAM

PERENJORI

CUNDERDIN

CARNAMAH

CHARA

YITPI P

GILES

ARRIVATO

WYLAH

LANG

PETRIE

MITRE

KUKRI

STRZELECKI

BABBLER

THORNBILL

WYALKATCHEM

Wheat Quality Australia

For the protection and enhancement
of the quality reputation of
Australian wheat